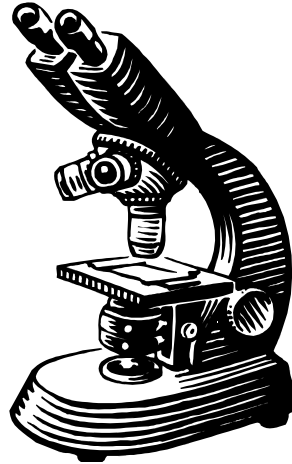
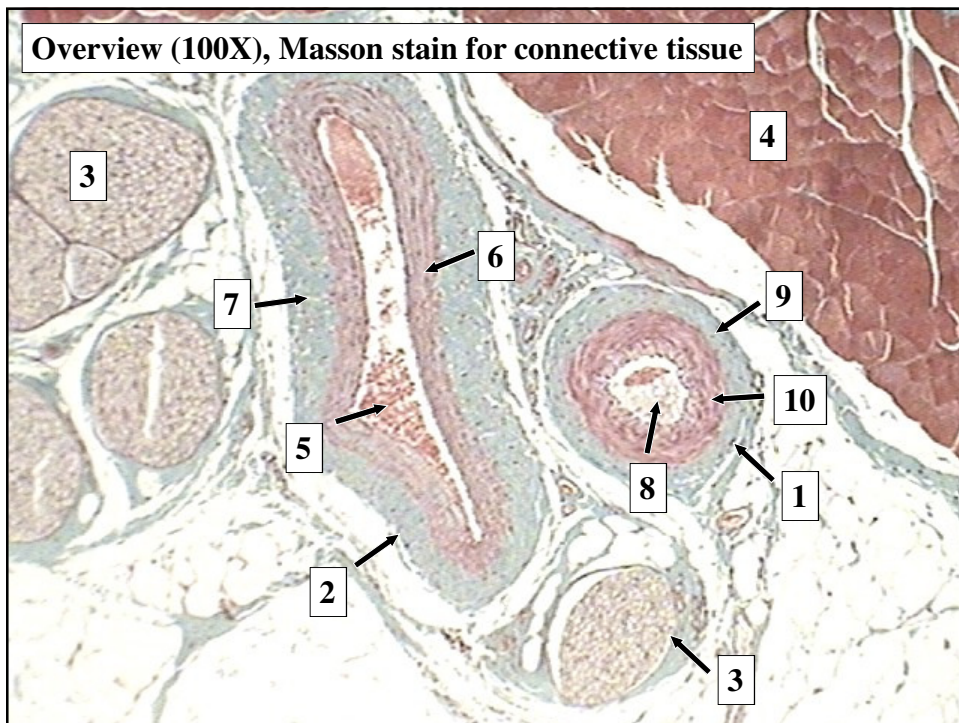
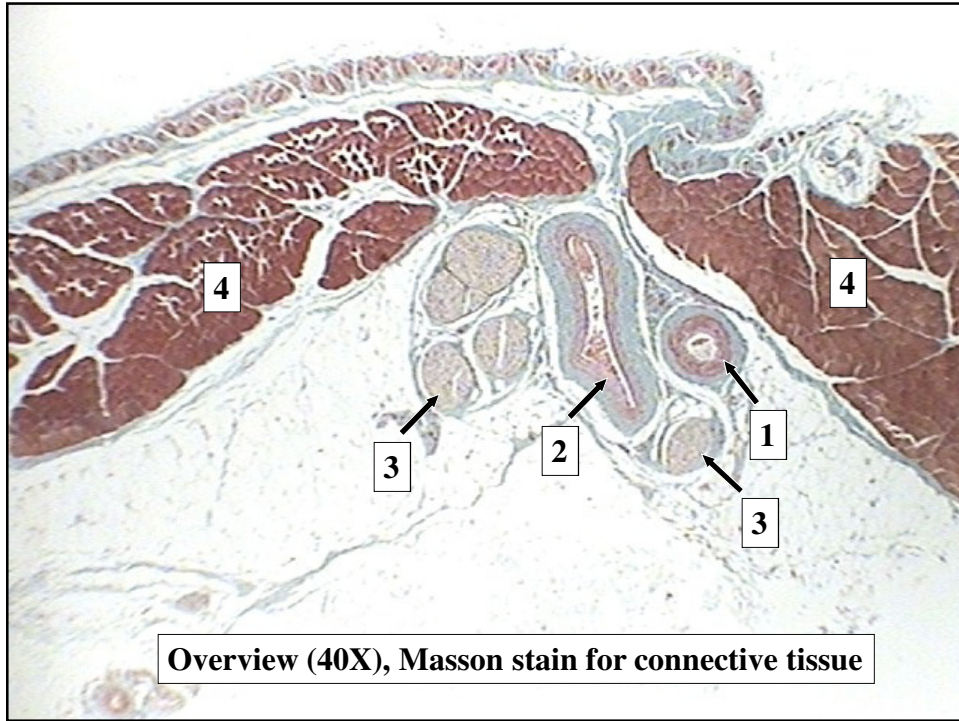


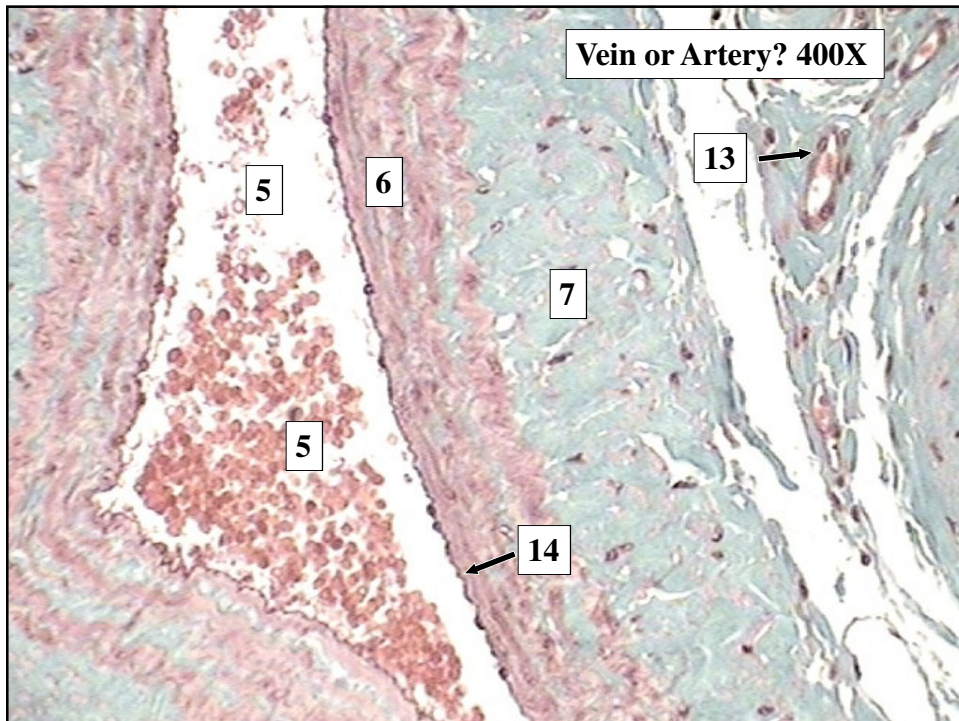
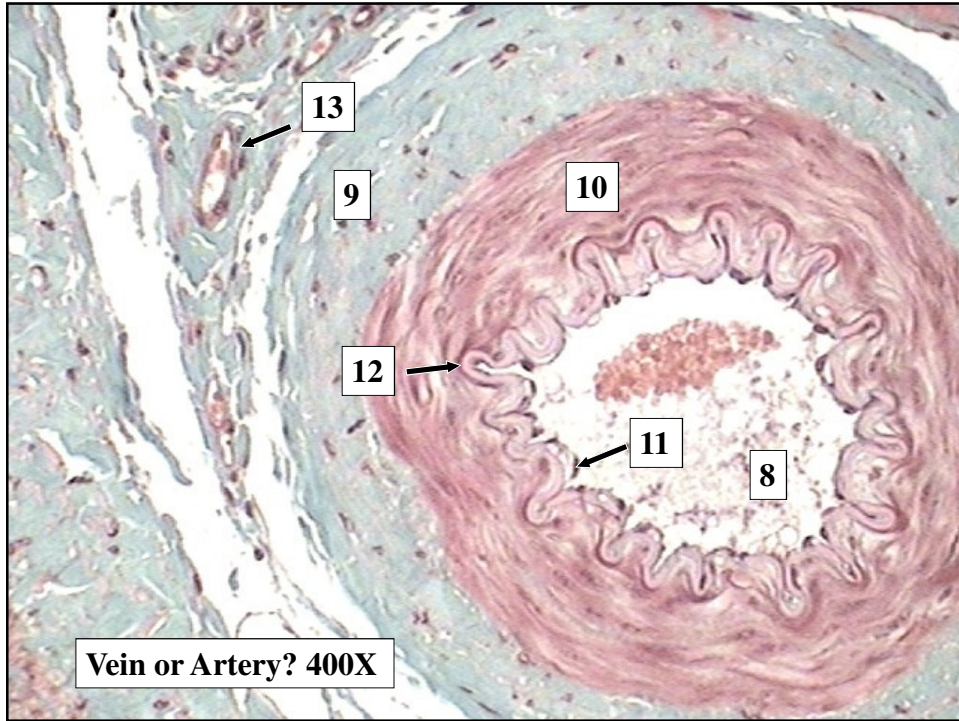
***243 Unit 3
Labs 1 and 4***



**Histology Slides for the
Cardiovascular System**

- **Slides are presented in order of magnification**
- **As you view the following slides, make sure you can accomplish these goals:**
 - 1. Can you identify the vessels and tissue layers observable on the slides?**
 - 2. Can you identify the specific structures or layers indicated by the numbered arrows or brackets?**
- **At the end of a sequence, you will find the answers to the above for each vessel and layer**





Artery, Vein, Nerve Tissue stained with Masson stain

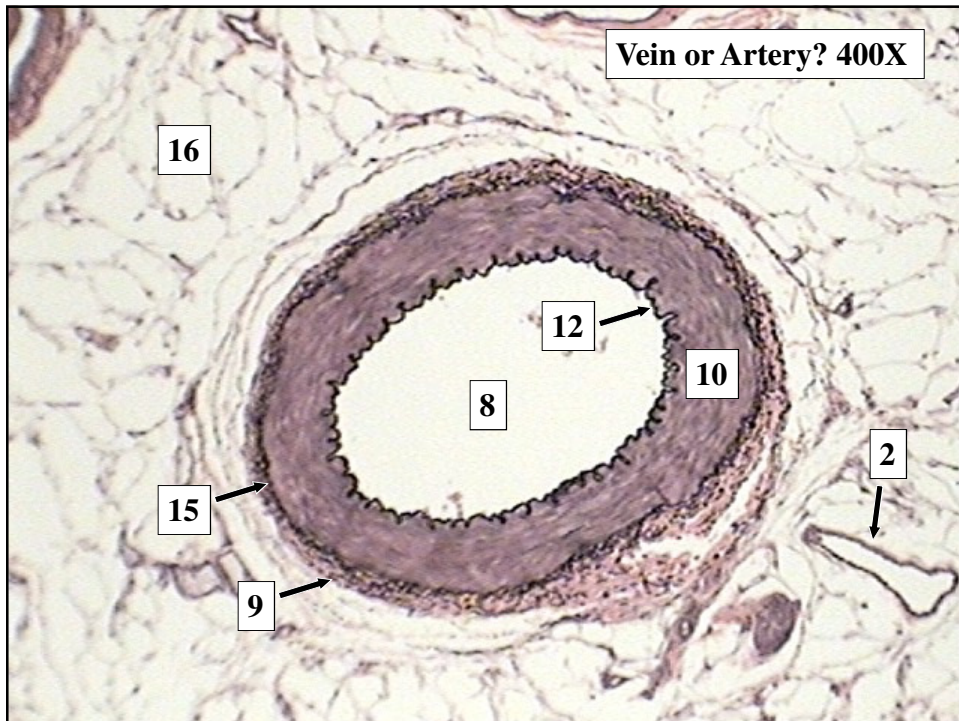
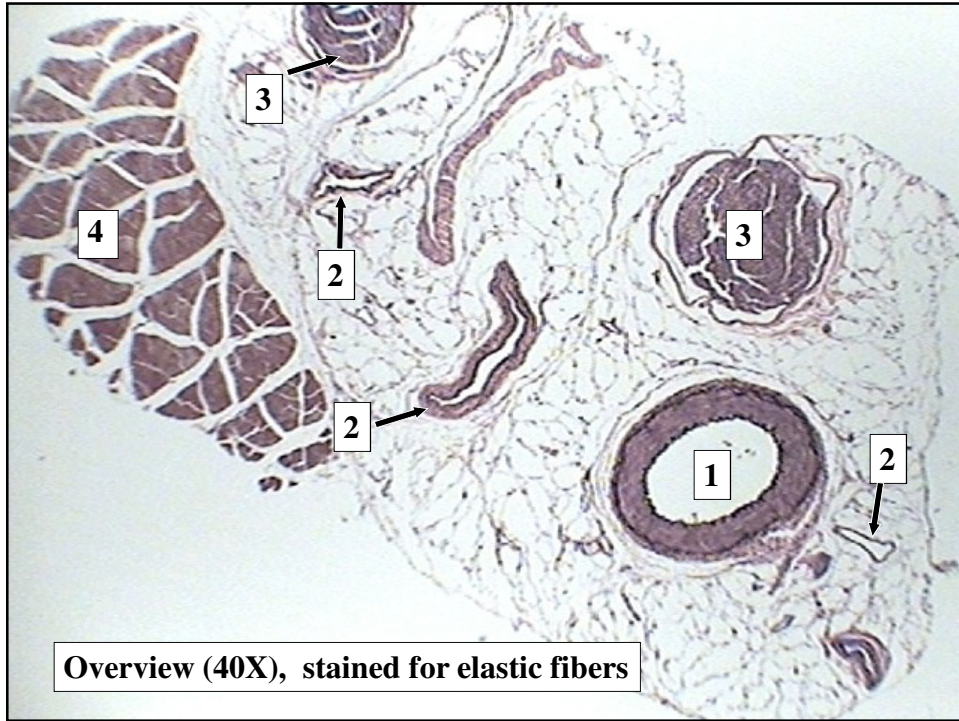
Slides 2 through 5:

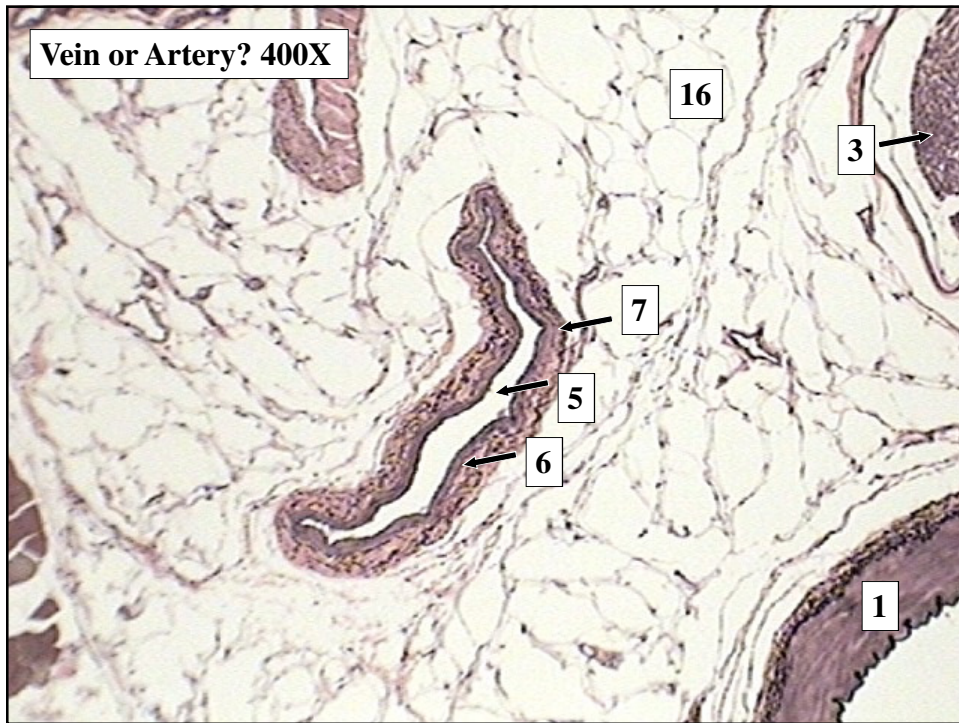
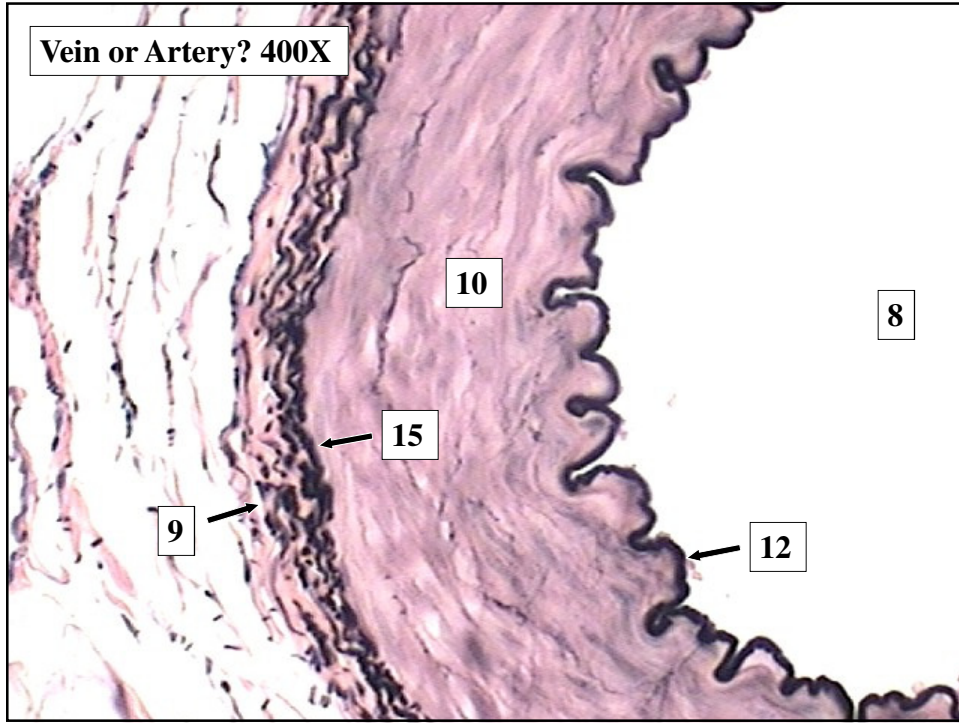
- 1. Artery**
- 2. Vein**
- 3. Nerve fascicles**
- 4. Skeletal Muscle Tissue**
- 5. Lumen of the vein (with RBC's)**
- 6. Vein Tunica Media- smooth muscle layer**
- 7. Vein Tunica Externa- connective tissue layer**
- 8. Lumen of the Artery (with RBC's)**
- 9. Artery Tunica Externa- connective tissue layer**
- 10. Artery Tunica Media- smooth muscle layer**

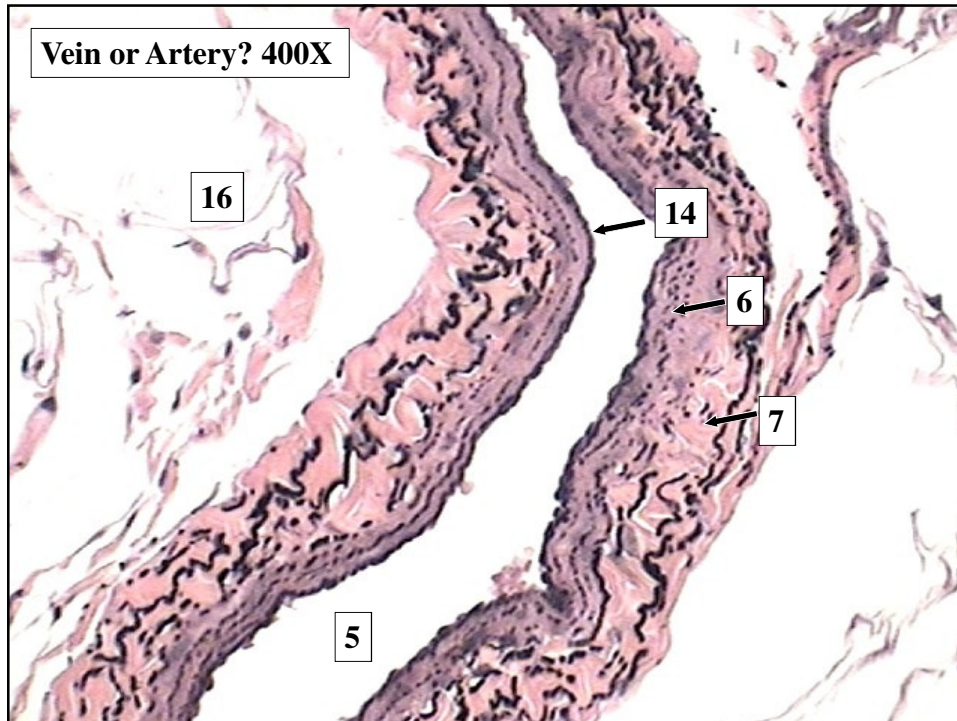
Artery, Vein, Nerve Tissue stained with Masson stain

Slides 2 through 5:

- 11. Artery Tunica Interna- endothelial cells (simple squamous)**
- 12. Artery Tunica Interna- Internal elastic lamina**
- 13. Capillary Tunica Interna- endothelial cells**
- 14. Vein Tunica Interna- endothelial cells (simple squamous)**







Artery, Vein, Nerve Tissue stained for Elastic Fibers

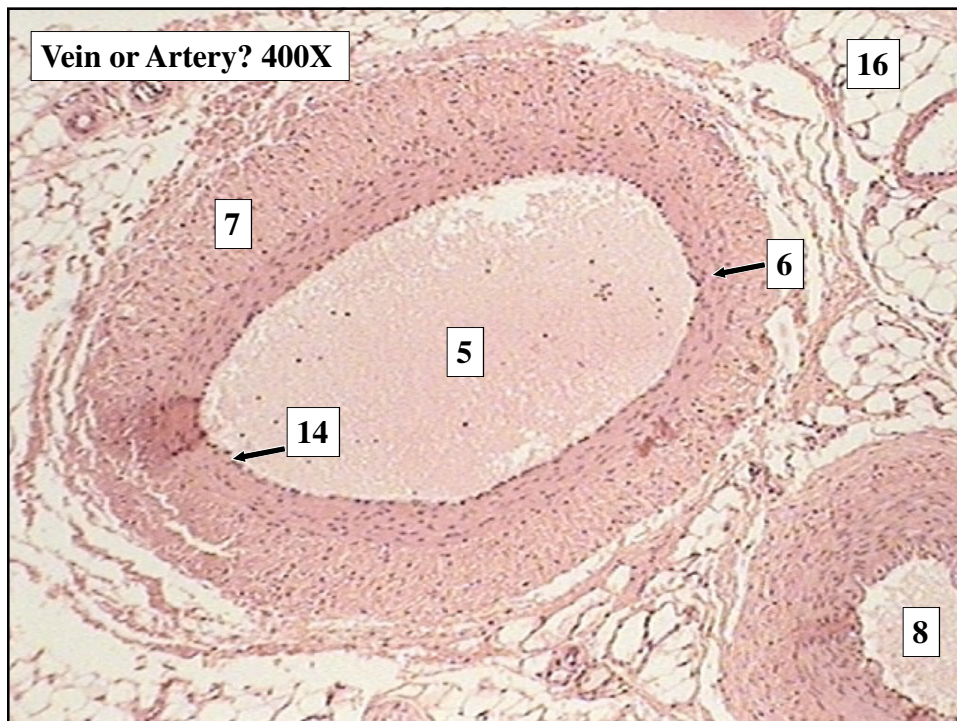
Slides 8 through 12:

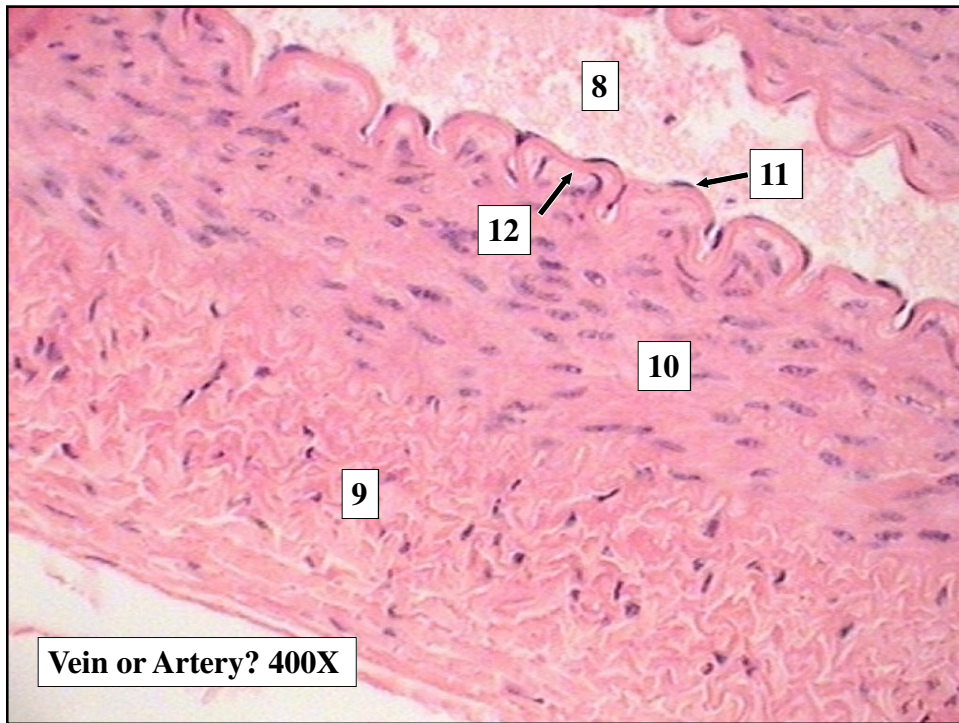
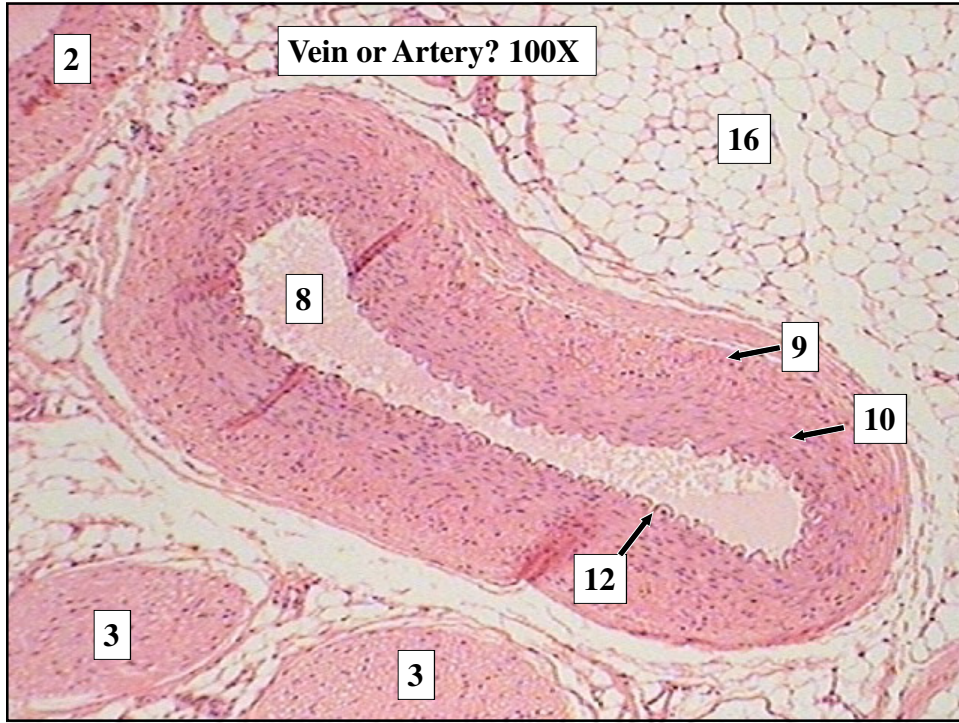
1. Artery
2. Vein
3. Nerve fascicles
4. Skeletal Muscle Tissue
5. Lumen of the vein
6. Vein Tunica Media- smooth muscle layer
7. Vein Tunica Externa- connective tissue layer
8. Lumen of the Artery (with RBC's)
9. Artery Tunica Externa- connective tissue layer
(demonstrating elastic fibers)
10. Artery Tunica Media- smooth muscle layer

Artery, Vein, Nerve Tissue stained for Elastic Fibers

Slides 8 through 12:

11. Artery Tunica Interna- endothelial cells (simple squamous)
12. Artery Tunica Interna- internal elastic lamina
13. Capillary Tunica Interna- endothelial cells
14. Vein Tunica Interna- endothelial cells (dark band is due to the elastic fibers in the basement membrane)
15. Artery Tunica Media- external elastic lamina
16. Adipose cells





Artery, Vein, Nerve Tissue, Nonspecific Stain

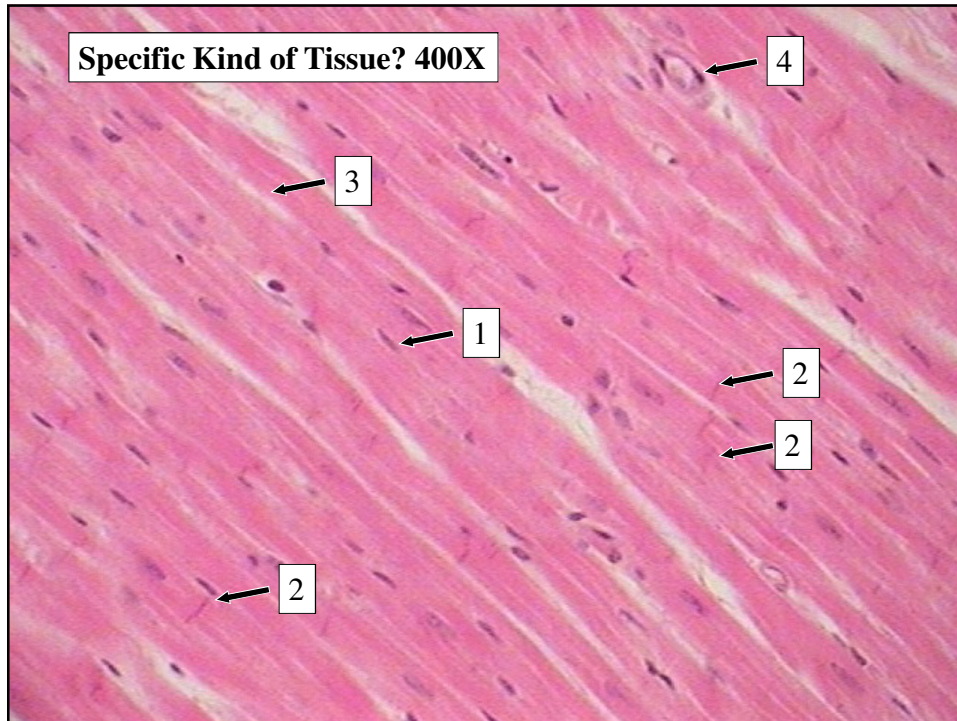
Slides 15 through 16:

- 1. Artery**
- 2. Vein**
- 3. Nerve fascicles**
- 4. Skeletal Muscle Tissue**
- 5. Lumen of the vein**
- 6. Vein Tunica Media- smooth muscle layer**
- 7. Vein Tunica Externa- connective tissue layer**
- 8. Lumen of the Artery (with RBC's)**
- 9. Artery Tunica Externa- connective tissue layer
(demonstrating elastic fibers)**
- 10. Artery Tunica Media- smooth muscle layer**

Artery, Vein, Nerve Tissue, Nonspecific Stain

Slides 15 through 16:

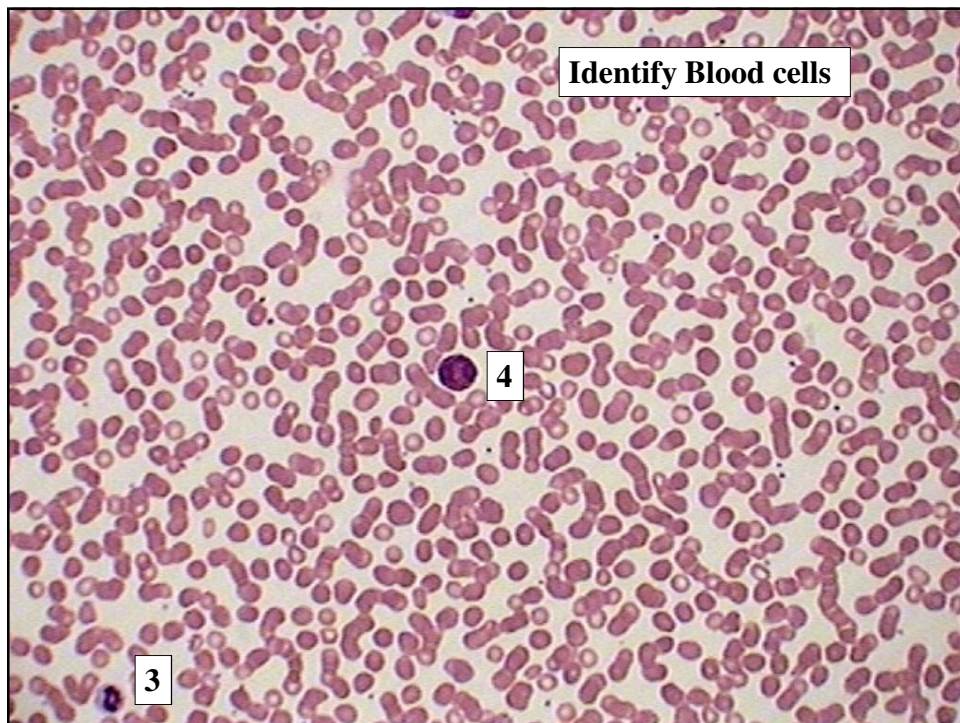
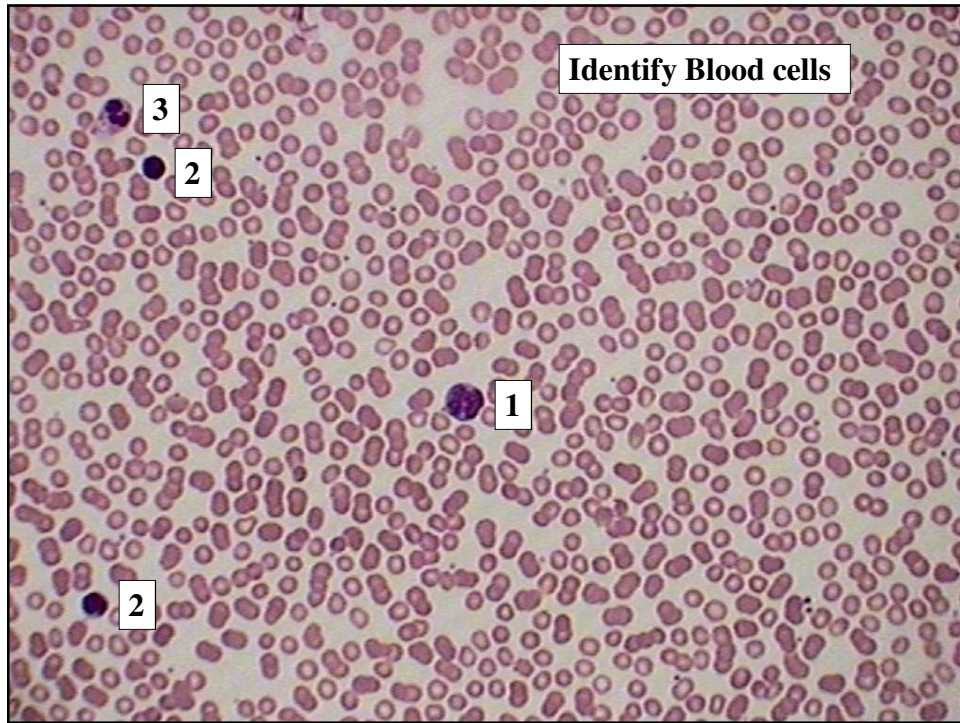
- 11. Artery Tunica Interna- endothelial cells (simple squamous)**
- 12. Artery Tunica Interna- internal elastic lamina**
- 13. Capillary Tunica Interna- endothelial cells**
- 14. Vein Tunica Interna- endothelial cells (simple squamous)**
- 15. Artery Tunica Media- external elastic lamina**
- 16. Adipose cells**

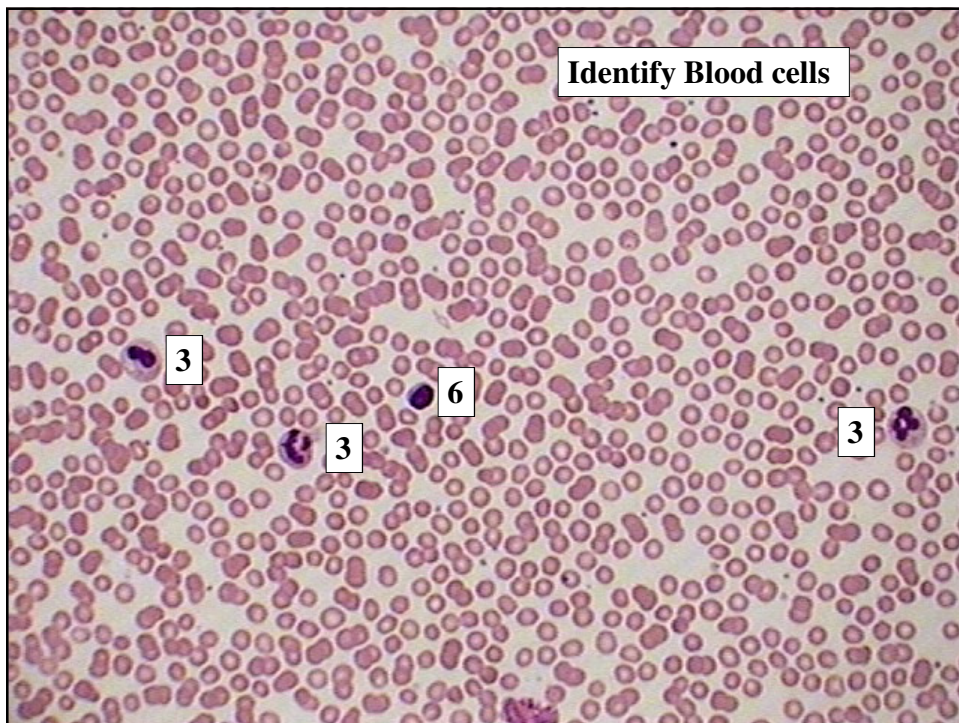
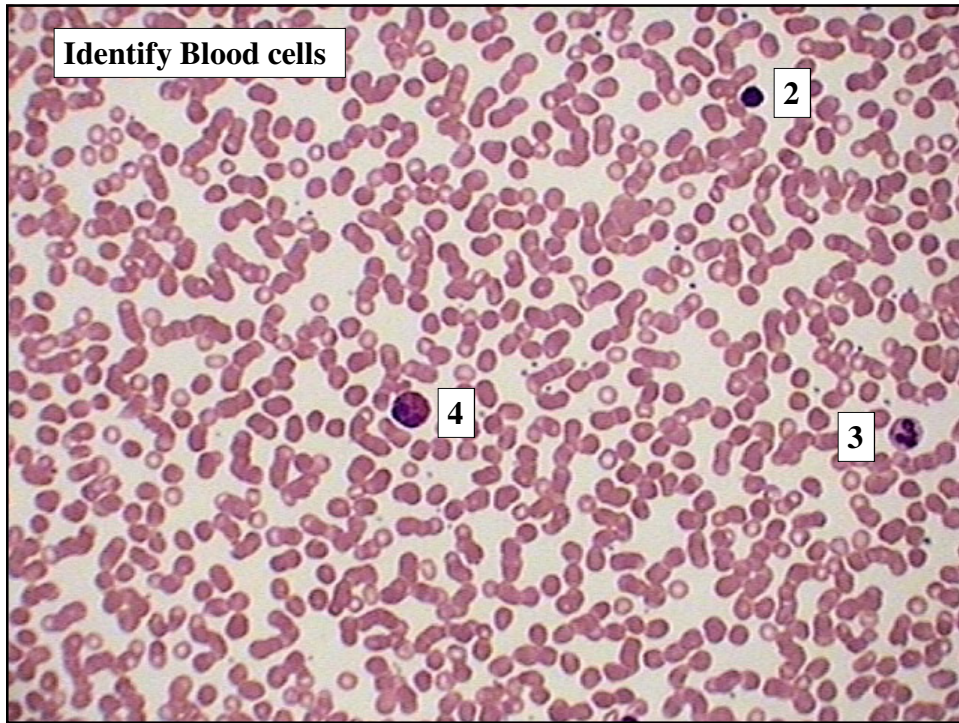


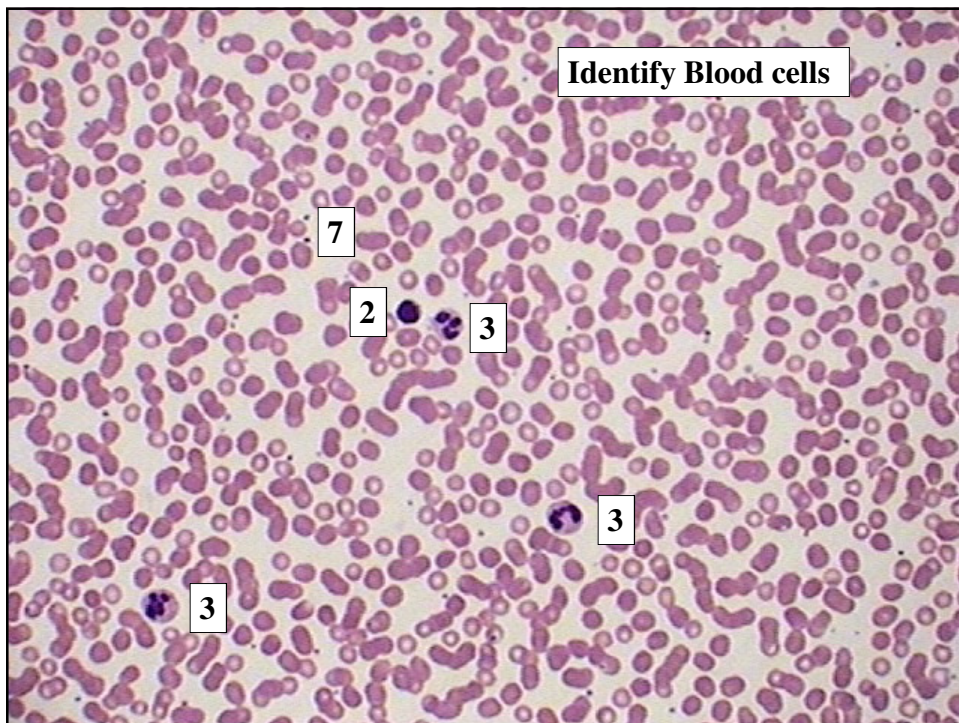
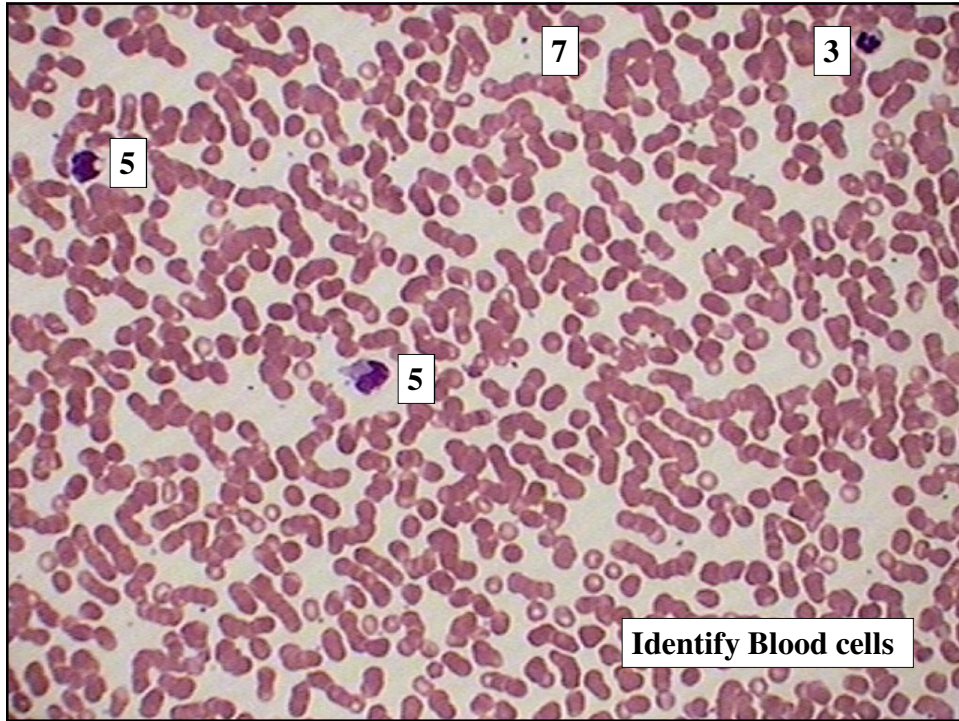
Cardiac Muscle Tissue

Slides 20:

1. Nucleus of a Cardiac Muscle Cell
2. Intercalated Disc
3. Branching Fibers
4. Capillary Tunica Interna- endothelial cells







Blood Cells Slides 22-27

- 1. Basophil**
- 2. Small Lymphocyte**
- 3. Neutrophil**
- 4. Eosinophil**
- 5. Monocyte**
- 6. Large Lymphocyte**
- 7. Platelets**